

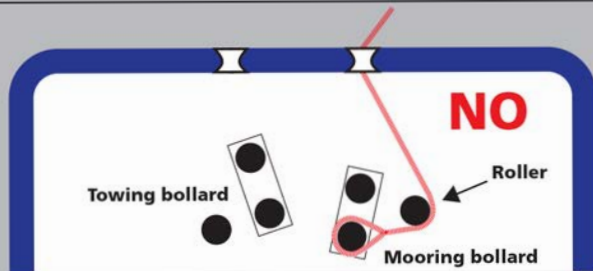
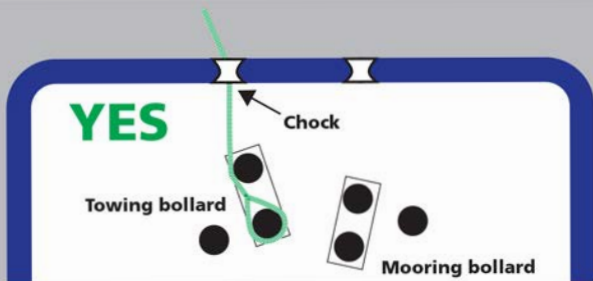


# ALFONS HÅKANS

TOWAGE • SALVAGE • ICEBREAKING • HEAVY TRANSPORT • SHIP REPAIR YARD

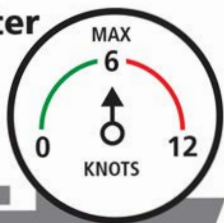
## SAFE HARBOUR TOWAGE

Pre-plan the towage in cooperation with the Tug Master before connecting the towline and communicate the strength (SWL) of the bollard and rope lead to the Tug Master.



**1a**

**Speed through water**

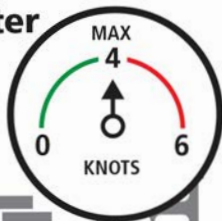


*Reduce ship's speed to max 6 knots when making fast to the forward tug.*

**SAFE TOWAGE IS BASED ON CLEAR COMMUNICATION**

**1b**

**Speed through water**



*Max 4 knots in bow-to-bow operation.*

## 2

### Connecting tow line



*Connecting the forward tug: Send heaving line from the ship's shoulder. The tug stays behind the bow wave.*

## 3

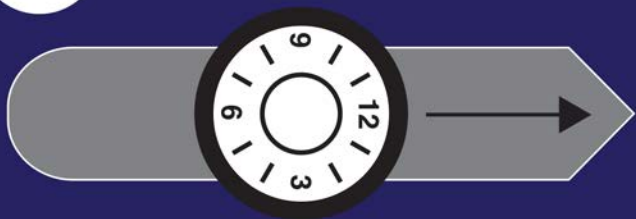
### Communication



*Pilot or Ship's captain instructs how and where to make fast. Crew confirms to tug captain that the towing line has been made fast.*

# 4

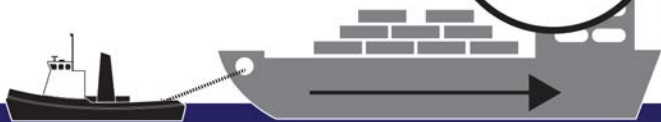
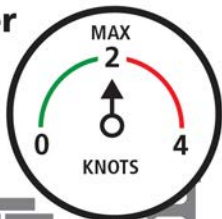
## Directions & Power



*Towing directions: Use ship like a clock face or use cardinal points (N, E, S, W). Towing power: use 0 – 100 %*

# 5

## Speed trough water



*Max 2 knots when the ship is moving astern with conventional tug at the bow.*

**6a**

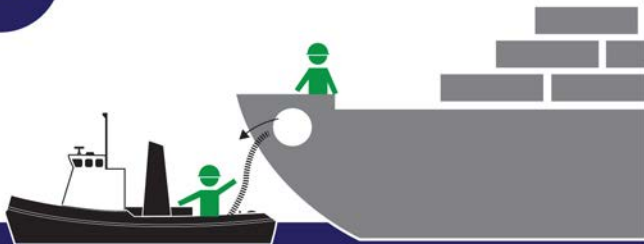
## Disconnecting stern tug



*Lower the tow line to tugboat's deck in controlled manner.*

**6b**

## Disconnecting bow tug



*Lower the tow line to tugboat's deck in controlled manner.*

# 24H Harbour Towage Service in Finland

---

## **Pori**

24/7 mobile +358 400 591 560

## **Rauma**

24/7 mobile +358 400 521 854

## **Uusikaupunki**

24/7 mobile +358 400 818 814

## **Turku - Naantali - Parainen**

24/7 mobile +358 400 521 919

## **Hanko - Koverhar - Inkoo**

24/7 mobile +358 400 522 034

## **Helsinki - Vuosaari - Kantvik**

24/7 mobile +358 400 522 036

## **Kotka - Hamina**

24/7 mobile +358 400 258 739



**FINNTUGS OY**



**ALFONS HÅKANS**

TOWAGE • SALVAGE • ICEBREAKING • HEAVY TRANSPORT • SHIP REPAIR YARD

**[www.alfonshakans.fi](http://www.alfonshakans.fi)**